


Sustainability,
Design and
Architecture
*at the service
of people*

ACTIU





Design, Sustainability and People;
A Mediterranean
industrial project that
looks to the future

Company *and history*

1968-1970
Get to know us

1982-1995
Expansion

2000-2008
Team

2012-2017
Brand

2018-2019
50 Years

2019-2020
People

2020-2022
Culture

2023
Evolution

2024
Industry

2025
Life-Friendly
Spaces

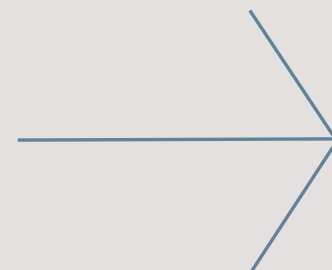
see video



Actiu *Company Awards*



*Vicent Berbegal, European
Entrepreneur of the Year 2017*



Corporate Project

We are moved by values like architecture, our roots to our territory, the innovation and development, sustainability and on top of all, the people and their wellbeing. Actiu is a family owned company of first generation, professionalized and vanguard with the aim to guarantee the wellbeing of the users and the durability of its products, which combine design, quality and innovation.



European Business of the Year
at the European Business Awards



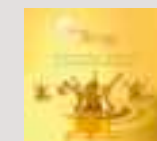
MAZ Award
Healthy Company



Club Marketing Mediterraneo (CMM)
Presents awards to the best brands in the Alicante province



Unidos 8 de Marzo
Presented the Best Businessperson Award to the founder of Actiu, Vicente Berbegal



Nominated for the
2011 International ARSEG Awards



Green Seal Award
from the Valencia Stock Exchange

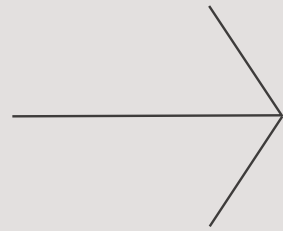


BID2012 Award
for being a company dedicated to design



ALCE Award
for creativity in advertising in the best spot

Our *Values*



Well-being



Design



Innovation



Manufacturing



Sustainability



Around *the World*

96 Countries
120 Showrooms
1500 Projects



ALGERIA - ANGOLA - ARGENTINA - AUSTRALIA - AUSTRIA - AZERBAIJAN - BAHRAIN - BELGIUM - BRAZIL - BULGARIA - CANADA CAPE VERDE - CHILE
CHINA - COLOMBIA - COSTA RICA - CYPRUS CZECH REPUBLIC - DENMARK - DOMINICAN REPUBLIC - ECUADOR ECUATORIAL - GUINEA EGYPT
ESTONIA - FINLAND - FRANCE - FRENCH - POLYNESIA - GERMANY GHANA - GREECE GUADALUPE GUATEMALA - GUINEA - HAITI - HOLLAND
HONG KONG - HUNGARY - ICELAND - INDIA INDONESIA - IRAN - IRAQ - IRELAND ITALY - IVORY - COAST JAPAN - JORDAN - KAZAKHSTAN
KOREA - KUWAIT - LEBANON LIBYA - LITHUANIA - LUXEMBOURG - MALI MALTA - MARTINIQUE - MAURITANIA - MEXICO - MOLDOVA - MOROCCO
MOZAMBIQUE - NEW CALEDONIA - NICARAGUA NIGERIA - NORWAY - NZ - OMAN - PANAMA - PERU - PHILIPPINES - POLAND - PORTUGAL -
PUERTO RICO - QATAR - REUNION ISLAND - ROMANIA - RUSSIA - SAUDI ARABIA - SHANGHAI - SENEGAL - SINGAPORE - SLOVAKIA - SLOVENIA -
SOUTH AFRICA - SPAIN SWEDEN - SWITZERLAND THAILAND - TUNISIA TURKEY - UAE UKRAINE - UNITED KINGDOM - URUGUAY - USA - VENEZUELA



Sustainable on the outside,
healthy on the inside

Sustainable architecture

LEED
Platinum

see video 



LEED™ Certification: Leadership in Energy
and Environmental Design of our facilities

In 2011, our corporate facilities were recognised as
LEED™ GOLD and since 2017, we increased our
score and achieved **LEED™ PLATINUM** maintaining
the highest recognition today, recertification after
recertification.

Leed, *the consequence of a philosophy*

CO₂ tons avoided: TmCo₂ Eq 1.845

Present in 96 countries

No. of product references: 35.000

Production capacity: 2.000.000 € a week



ANUARIA
Premios del Diseño
Gráfico Español



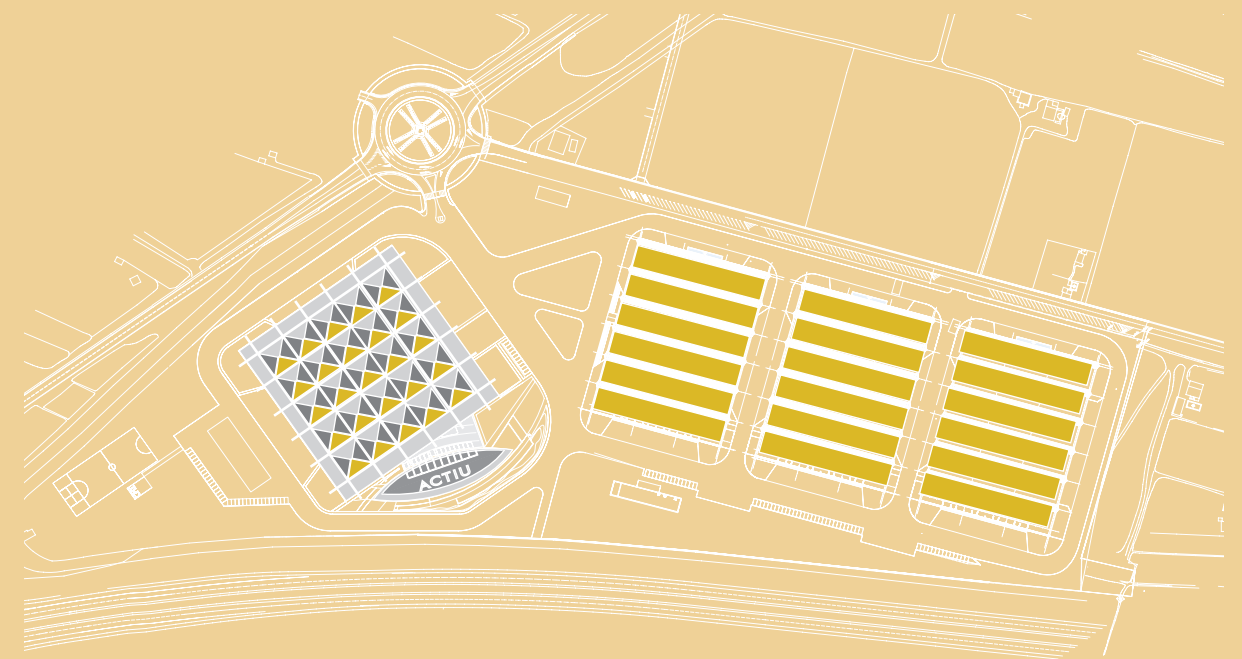
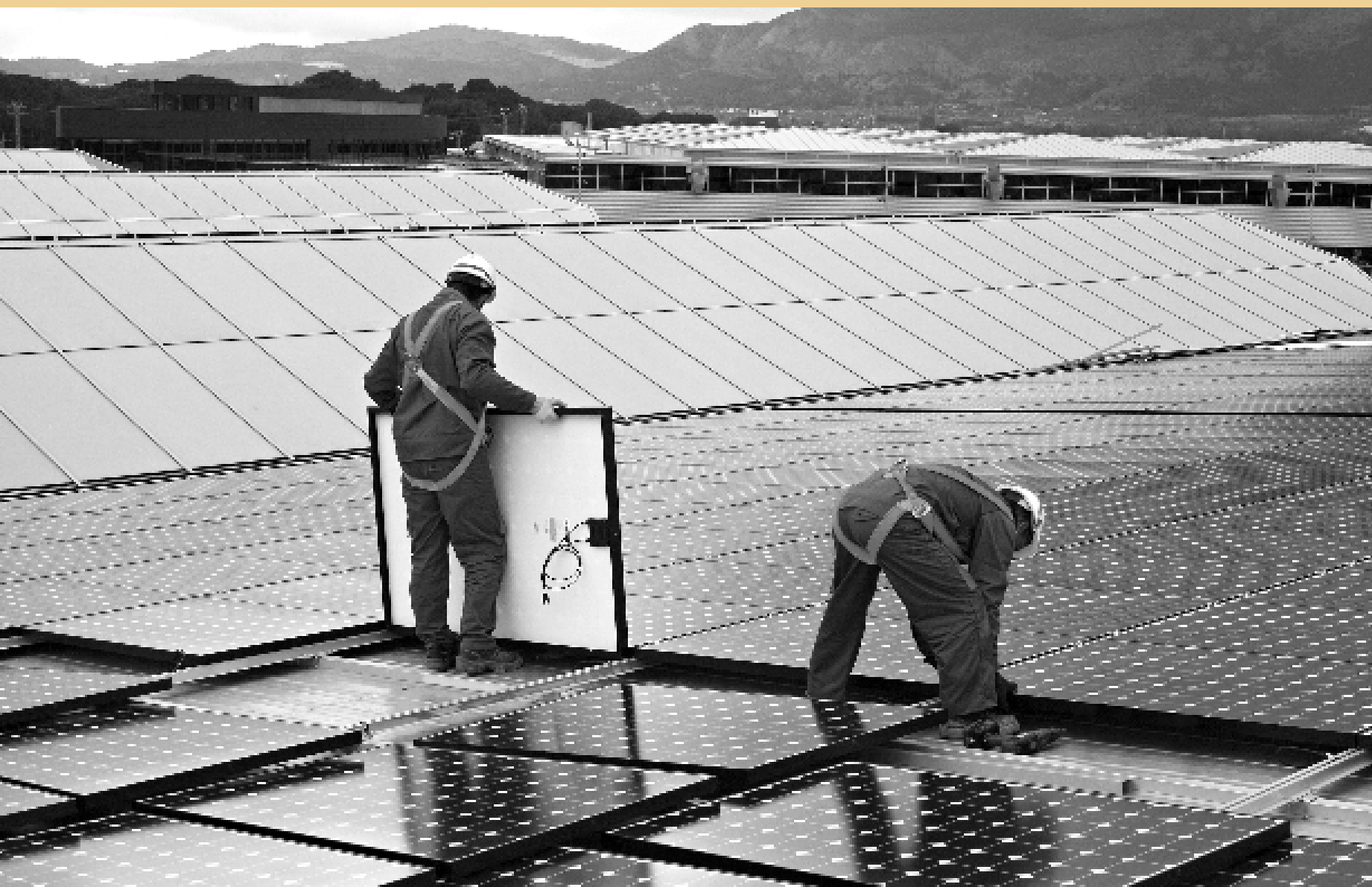
Actiu Technology Park Awards:



*The healthiest building in Spain,
the second in Europe, and fifth
in the world*



Self-sufficient *in resources*





Waters
rainwater





Natural
environment:
native landscape



Healthy

Well
Building
Standard

see video 

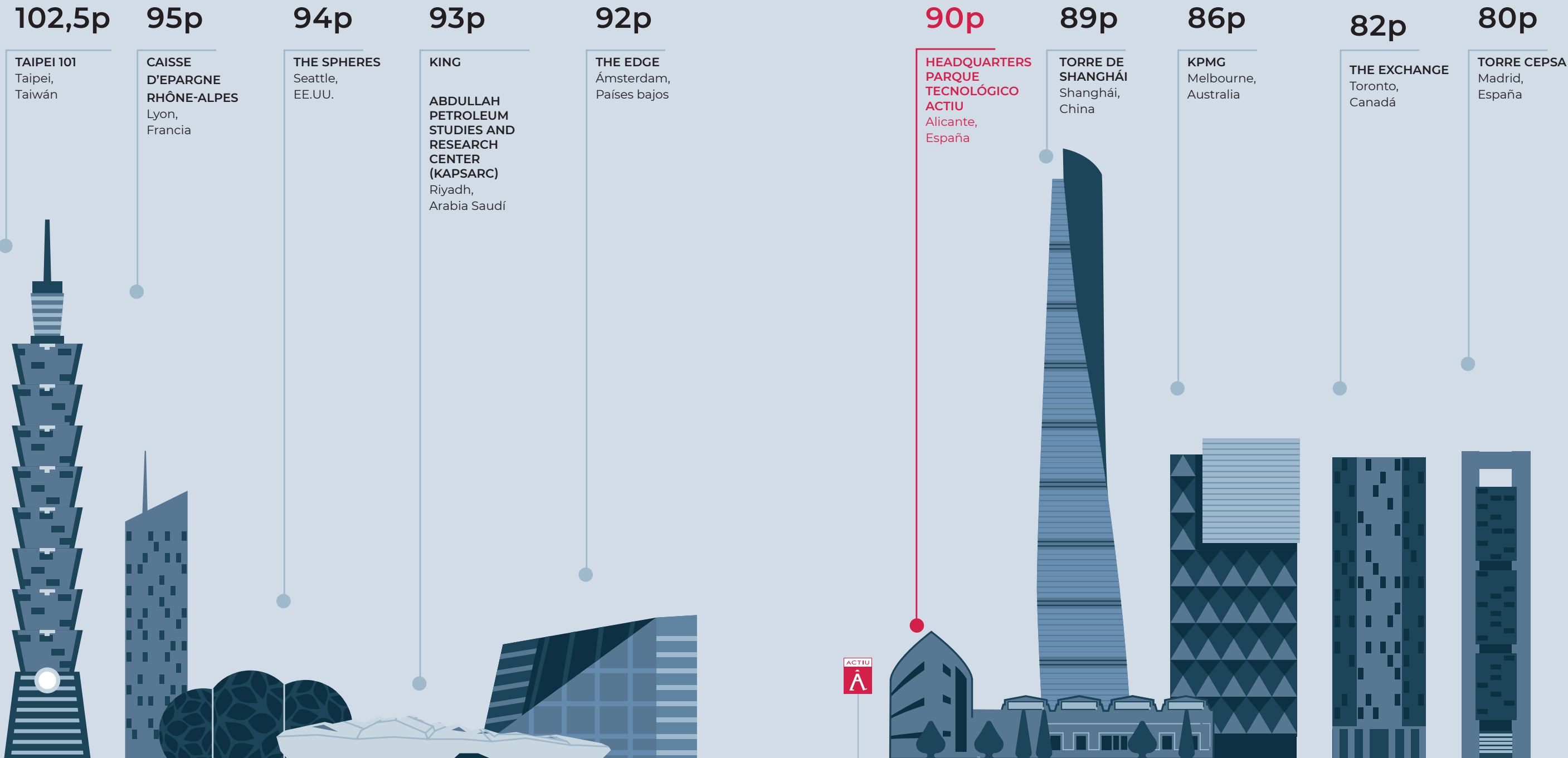


WELL™ certification: Leader in wellness and occupational health Occupational Health of our facilities

Our **philosophy** is based on **wellness** and we are a driving force in promoting the health and wellbeing of our building occupants. This translates into healthier environments, better lighting, cleaner air and improved quality of life. Since **2019**, our corporate facilities are recognised as **WELL™ PLATINUM**, being **recertified to the most up-to-date standard regulated by the International Well Building Institute**.

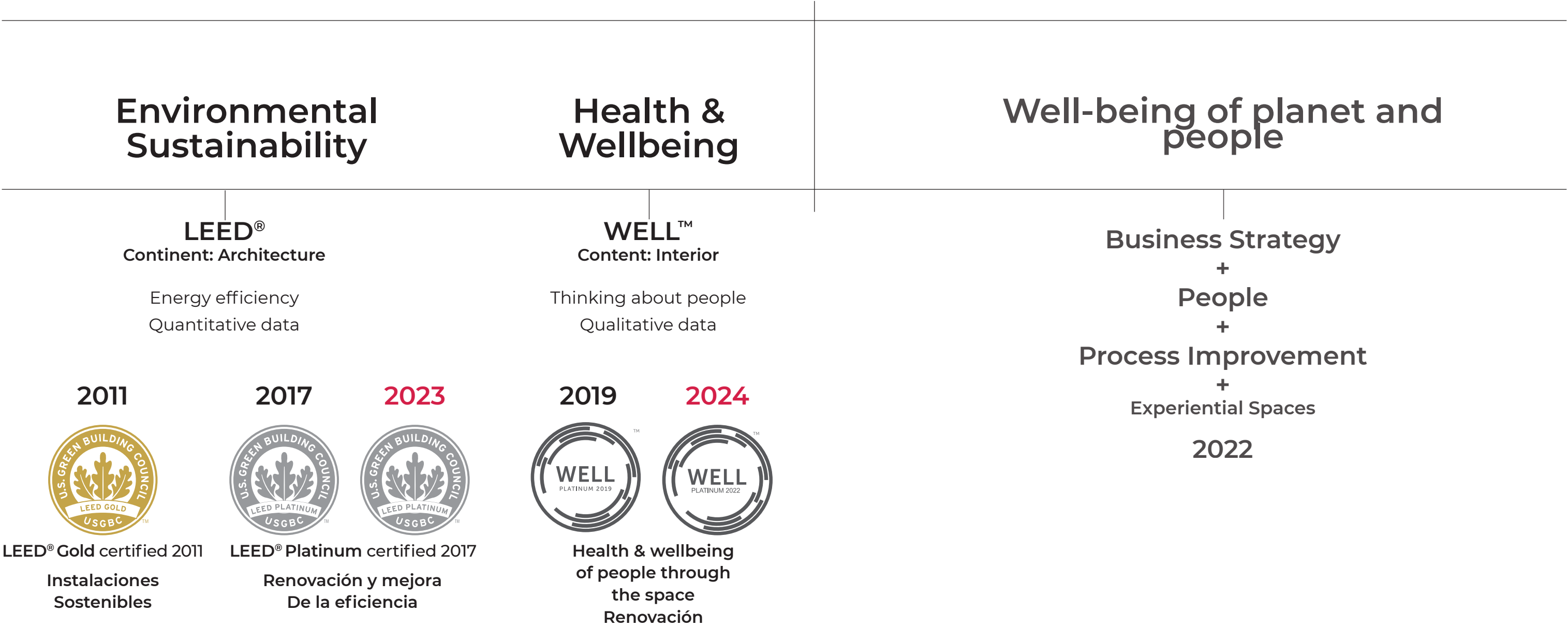
The welfare of facilities around the world

p= Points obtained in the WELL certification.



** The buildings shown are all WELL Platinum certified, in different categories: WELL v2 Certification, WELL v2 Core and WELL v2 Pilot.

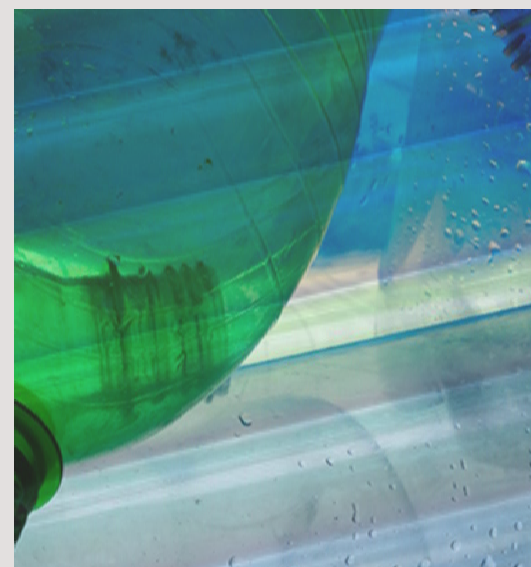
Actiu Technology Park



First industrial company to achieve LEED and WELL Certificates both at Platinum level.

Endless *Mediterranean*





Materials & *procede*

0% formaldehyde.
60 plastic injection robots.
Polyurethane with HFO.
Steel and aluminium 100% recycled.
Coating without OVCs.
Sustainable fabric with certification.





Industry enters a new sustainable

see video



We are already *Level*



Our commitment to LEVEL at Actiu

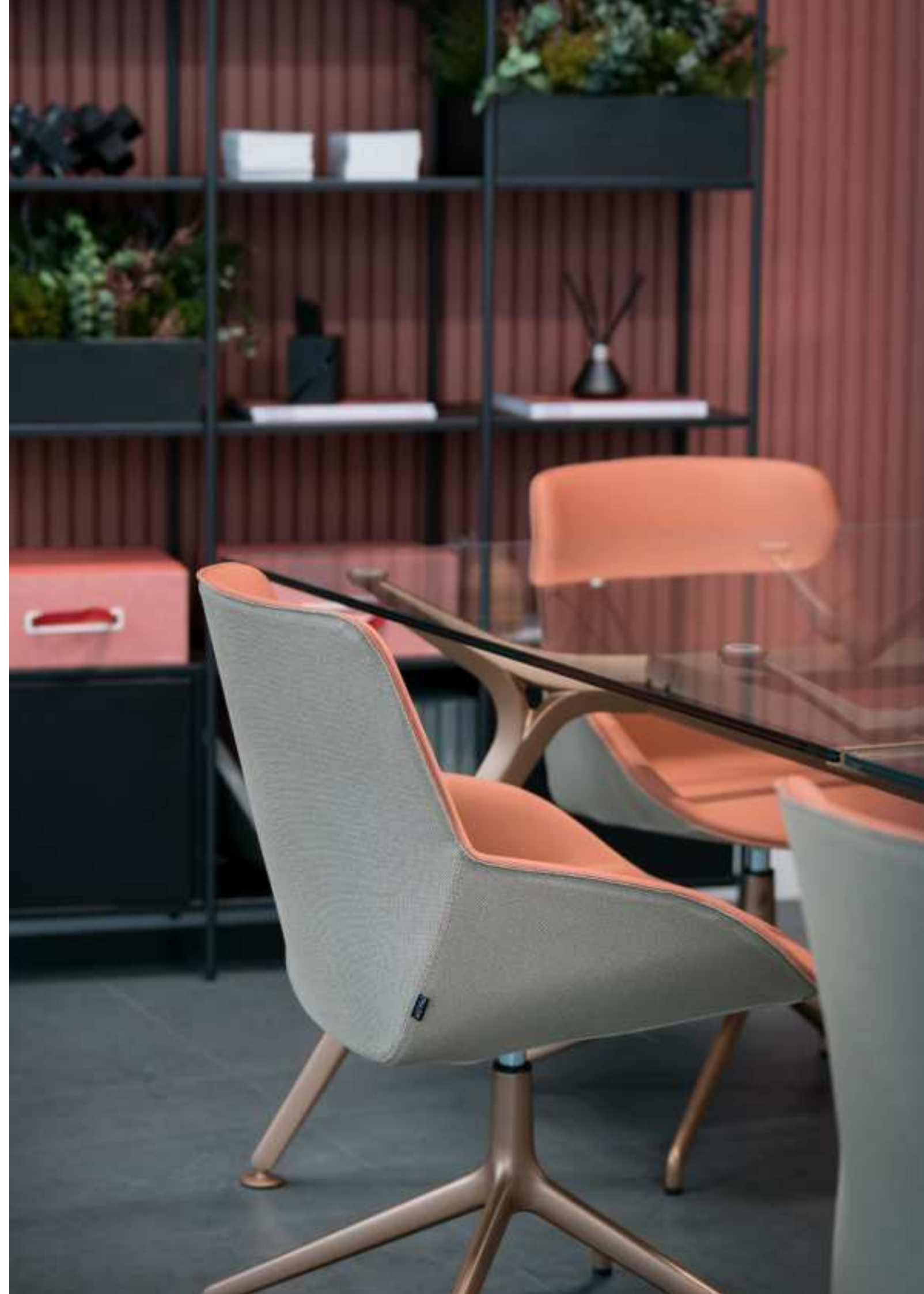
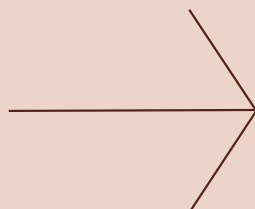
LEVEL is the first European product certification covering all relevant aspects of sustainability. The standard in which the fundamental criteria for certification are found has been developed by the European Office Furniture Federation (FEMB).

For ACTIU, it is an exercise in transparency to be able to communicate our social, economic and environmental impact to our stakeholders, taking the main areas of impact as our main areas of impact:

- **Composition and origin of materials** (recyclability, responsible origin FSC - PEFC, use of recycled materials).
- **Efficient use of resources** (energy, waste reduction, process optimisation and improvements from the design phase, including supply chain and resource traceability).
- **Chemicals management, toxicity and disposal of hazardous substances** (establishing an advanced way of controlling the chemicals used and analysing regulatory compliance beyond basic requirements).
- **Durability, reusability and Life Cycle Analysis of products** (assessing the environmental impact of the product through its carbon footprint).
- **Corporate, ethical and social responsibility** (setting objectives and targets with a focus on generating fair labour practices and safe working conditions both in our processes and throughout our supply chain).

The scope of LEVEL 2 certified products corresponds to the following categories:

- **Tables:** 13 programmes
- **Chairs:** 32 programmes
- **Dividers:** 6 programmes
- **Archive:** 8 programmes



Materials *and production*

We are at the forefront
of manufacturing industry

Actiu team

Industry 4.0

Robotic manufacturing

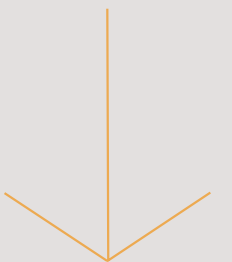
Custom-made
technology

Innovation in materials
and processes



Actiu *Team*

The heart of production



Welcome to the era of high performance offices.

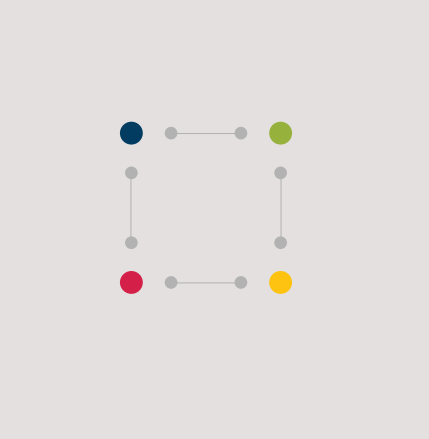
COOL WORK- KING

A High Performance Work Office is one that provides its workers with spaces for the exchange of knowledge and ideas to flow, that favours casual encounters between colleagues from different work teams, that encourages inter-generational socialisation between workers or that allows its teams to enjoy moments of disconnection for inspiration or relaxation.

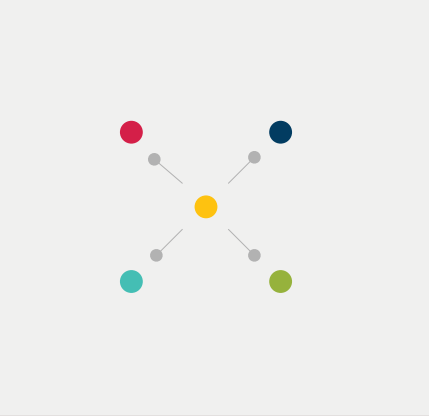
To achieve this, our equipment proposals connect the five basic work styles promoted on the Cool Working methodology.



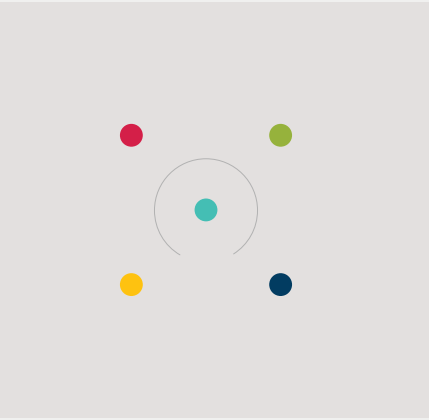
SOCIALIZACIÓN
/ SOCIAL TIME



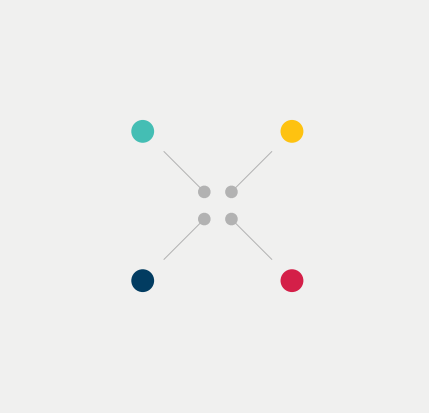
APRENDIZAJE
/ LEARNING



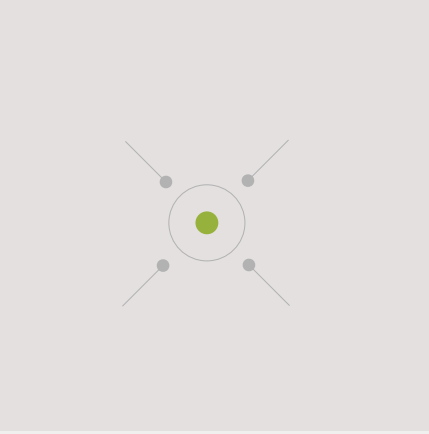
CONCENTRACIÓN
/ FOCUS



COLABORACIÓN
/ TEAM WORK



CONFIDENCIALIDAD
/ PRIVACY



*Did you
know
that...?*



Almost all (86%) productivity problems in organisations are related to the working environment. ⁽¹⁾

An environment that facilitates a high level of interaction between workers stimulates the creativity and knowledge transfer that are crucial to generate innovation. ⁽²⁾

Did you know that the work environment can influence worker satisfaction by up to 24%? ⁽³⁾

Did you know that informal meeting spaces are where most (80%) of valuable interactions between colleagues take place? ⁽⁴⁾



[1] Sehgal, S., (2012), Relationship between Work Environment And Productivity, International Journal of Engineering Research and Applications 2(4): 1992-1995

[2] Haynes, B., (2008), An evaluation of the impact of the office environment on productivity, Facilities, 26 (5/6), 178-195

[3] Brill, M., Weidemann, S., (2001), Disproving Widespread Myths About Workplace Design, Kimball International, Jasper, Indiana

[4] Ward, V & Holtham, C., (2000), The role of private and public spaces in knowledge management, presented at Knowledge Management: Concepts and Controversies Conference, 10-11 February 2000, University of Warwick, p 7

Your high performance space in 4 steps

Cool Working requires four steps that constitute the basic processes of the methodology. Each of these processes uses IOP (People Oriented Innovation) tools from the Institute of Biomechanics of Valencia.



Identification of needs

We gather the requirements in the scope of your office space. The identification of needs can involve both the organisation's managers and the workers who are going to use the facilities. The collected requirements will allow us to generate a specification document.



Proposal generation

As a starting point for the generation of the proposal, we prepare a specifications document (briefing) with all the requirements collected in the previous phase. We involve your team in a session to generate solutions at a conceptual level, covering the requirements collected.



Evaluation of solutions

Our development team will generate solutions based on the conceptual proposals, and document them in a format suitable for your evaluation.



Accompaniment

The last step, the accompaniment step, includes the evaluation, training and communication of the solution. For this, we jointly evaluate the High Performance Space proposal in order to assess whether the objectives proposed at the beginning of the project have been duly covered.

A man and a woman are sitting at a dark table in a bright, modern office or lounge setting. The woman, with curly hair, is leaning over the table, looking at a smartphone held by the man. The man is wearing a blue t-shirt and khaki pants, and is looking down at the phone. A laptop is open on the table to the left. The background is blurred, showing yellow armchairs and large windows with greenery outside.

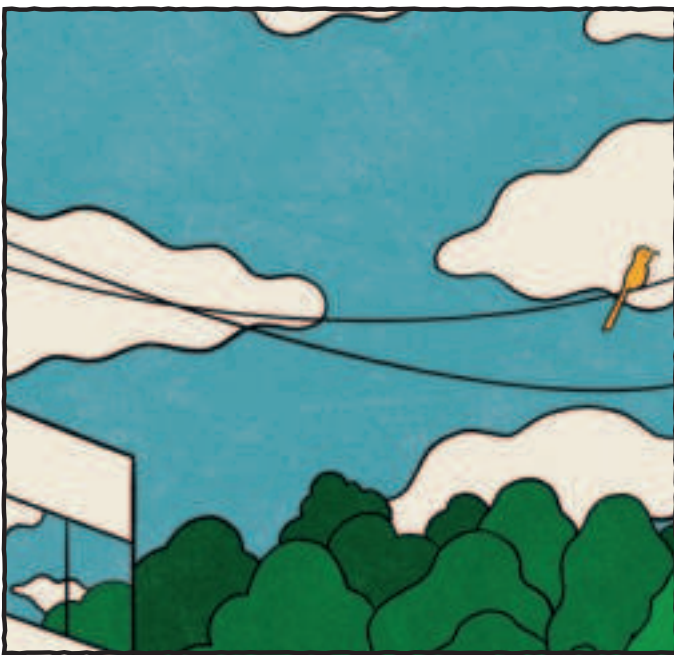
BEYOND WORKING

Lifefriendly
Spaces



Lifefriendly Spaces

What if we think of
spaces *for living*?



Welcome to *Lifefriendly* spaces

Beyond Working

Designing and manufacturing furniture that contributes to creating spaces that we call *Lifefriendly* Spaces is the challenge we set ourselves to continue building the ACTIU of the future. A business strategy to take our commitment to well-being and sustainability even further and, above all, to new countries and sectors.



What if instead
of inhabiting
spaces,
*we started to
live them?*



Actiu Purpose

// **01** Spaces
where *we prefer*
to get in rather
than to get out
of them.

// **02** Spaces that
care about the
environment

// **03** Spaces that
move with you

// **04** Spaces
where you feel like
meeting up

// **05** Spaces
where we can all
fit together

// **06** Spaces that
respect your own
space

// **07** Spaces in
which to *flourish*

// **08** *More human*
spaces thanks
to technology

Designers *Product*



Archirivolto Design

Founded in 1983 in Colle di Val d'Elsa (Italy), Archirivolto Design is the result of collaboration between designers Marco Pucci and Claudio Dondoli. For more than three decades, the studio has specialized in the design of seats, from sofas to stools and chairs for workspaces and collective environments. His designs incorporate different materials, with special emphasis on plastic.



Stone Designs

Stone Designs is a multidisciplinary studio that develops both interior design and product projects, but from a prism that makes them unique. That value is none other than the human value. Stone makes projects by and for people. Avant-garde projects because they have always, for almost 25 years now, been focused on the same objective, which is none other than helping us to be happier every day.



Ramos Bassols

Ramos Bassols are David Ramos and Jordi Bassols, both industrial designers. The studio started in 2004, after several years of experience in different fields such as urban furniture, tableware, lighting and office furniture. Ramos Bassols offers a personal view on contemporary design, always searching for the balance between form, function and aesthetics with products with clean lines, as well as warm and attractive for the public.



NACAR - Javier Cuñado

Nacar Strategic Agency collaborates with their client's team and become its strategic partner during each stage of their product life cycle to understand and design successful solutions to their end users and customers. To answer their most difficult questions, they use a variety of techniques, methodologies and best practices to support each stage of the product development life cycle.



Alegre Design

Andres Baldoví and Marcelo Alegre have worked together for more than 20 years, ensuring a cohesive and effective approach in guiding clients through the development of their products and delivering an accurate design vision. Working across different industries during this time has allowed them to cultivate intuition, gain perspective, and acquire knowledge of the complexities of our globalized world.



Sylvain Carlet & Isern Serra

Since 2008 Sylvain Carlet and Isern Serra have offered global design solutions (architecture, interior design and industrial design) for customers in public and private sectors. In the projects, developed in the office world, their work philosophy has always lead them to new functional solutions and to create suitable environments for the identity, the needs and the constant evolution of the companies nowadays.



Enrico Frigerio

Frigerio Design Group is an architecture studio specialised in designing the 'intelligent' workplace and promoting 'slow architecture', a design philosophy which draws its resources from the context. Founded in 1991 by Enrico Frigerio, FDG designs work environments with a smaller ecological footprint, ergonomically and emotionally comfortable, promoting well-being to all users.



Vicent Berbegal

Vicent Berbegal, founder of Actiu, is the essence of this story. His vision and dedication turned a workshop into the leading global office furniture company. His ethics marked the corporate culture, prioritising design and innovation. In the 1980s, he created the first TV stand in Spain and, a decade later, the first home PC desk, anticipating the rise of the Home Office. In 30 years, he guided Actiu's growth, adding talent and collaborating with professionals.



Odosdesign

For over 21 years Odosdesign has amassed experience by using creativity, research and transformative design to provide the most impactful and lasting results. Their work is a solution and a commitment with the aim of cultivating a long term relationship with their clients, shaping the industry by using creativity as a strong lead to simultaneously shape companies and the design culture.



Ramón Esteve Estudio

At Ramón Esteve Estudio we talk about architecture and design as a global and inseparable concept, generated under the same laws and with the same project premises. With a multidisciplinary team, we work together in the development of projects with character, in the search for a common goal: to generate creative responses in our environment by creating unique spaces, objects and brands.



Lledo & Campos

Their creations go from home office to office furniture, public property, interior architecture, fairs and exhibitions with practical, tempting, lasting, functional and logic proposals. They have done projects for companies such as: Actiu, Paco Capdell, Danone, Andreu World, Tekhne Italia, Grassoler, Porada, Kibuc, Mariner, Molder, Disnova, Ziru, etc.



Sigfrido Bilbao

Studied interior architecture at the Iade International School in Barcelona and industrial design at the Masana School in Barcelona. Member of the Bureau of European Designers Association BEDA and the Association of Professional Designers ADP. He worked for several years as an industrial designer in the companies Galo/ben and Assis mobiliario. In 1989 he founded his own studio, specialising in office, home and home office furniture.



Jose Manuel Ferrero de Estudi{H}ac

estudi{H}ac is conceived as a design atelier, founded by José Manuel Ferrero, specialised in carrying out tailor-made projects in product design, interior architecture and the creation of ephemeral assemblies. All of them are tailor-made for each client, creating unique, timeless spaces or products that surprise both for their initial visual and their history, offering a fresh and renewed vision of any company, product or brand.

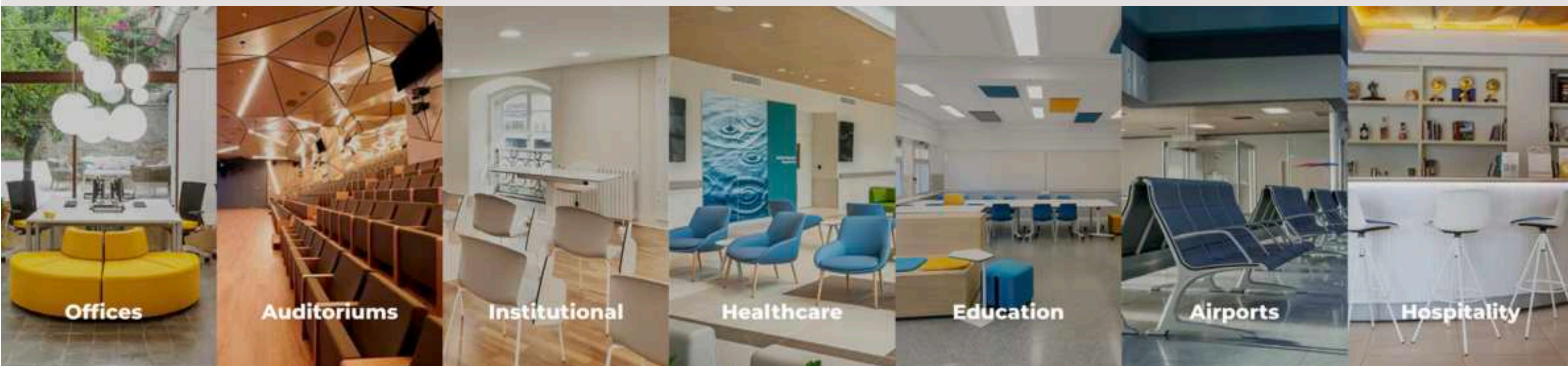


Arnau y Reyna

A+R design products that connect with the user and the spaces they inhabit. A+R start from simple ideas that evolve through the design process. Timeless pieces that are not influenced by passing trends. A+R believe in design as a strategy, an intangible tool that is a fundamental pillar for companies as a driver of productivity and growth.

Actiu *Projects*

Find inspiration from the best options for
furnishing your office space.



Offices Actiu

> **Endesa**
Seville, Spain

[see project](#)



Hospitality **Actiu**

> **AAMI Park Lounge**
Melbourne , Australia

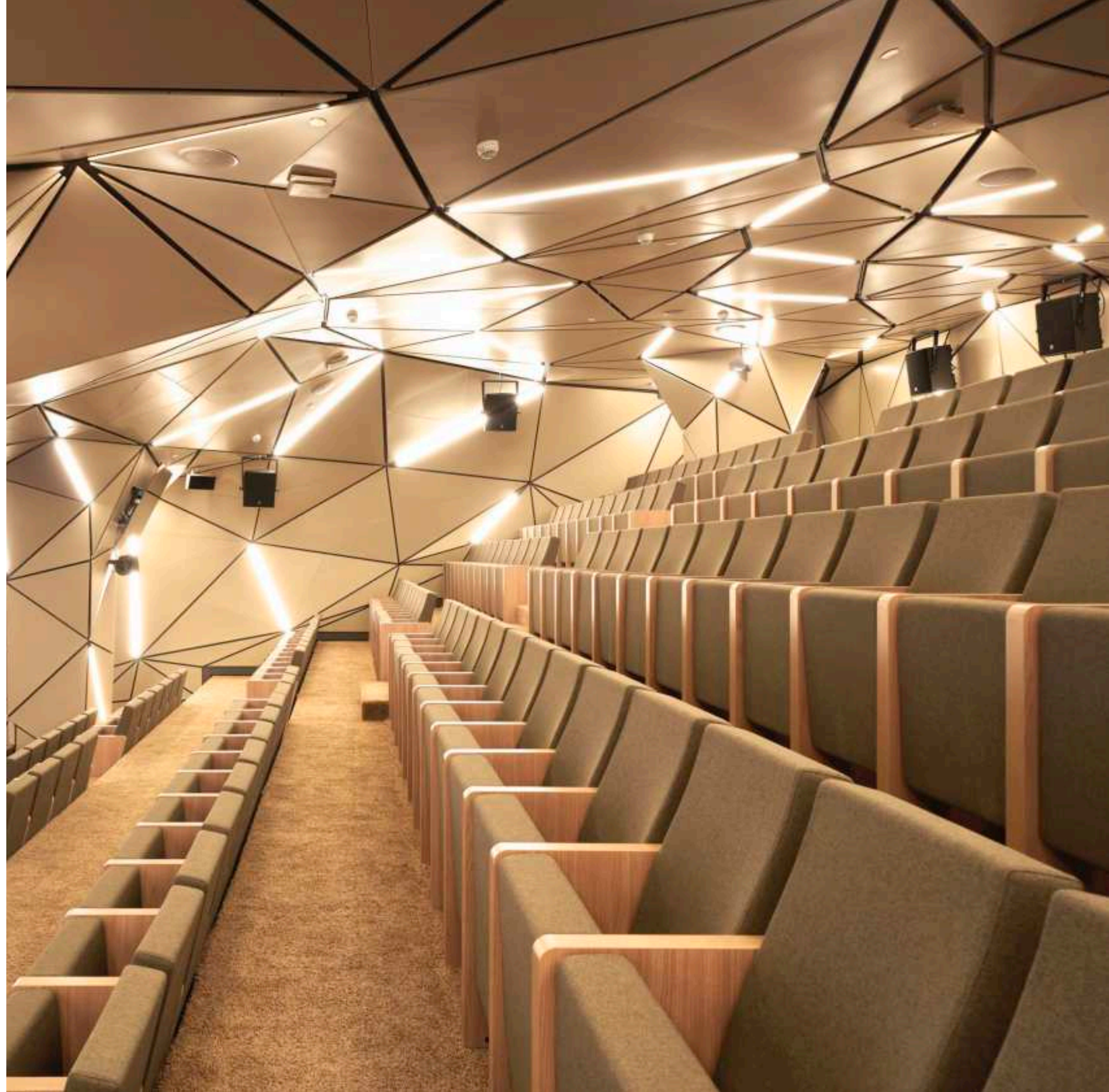
[see project](#)



Auditorium Actiu

> **Sberbank**
Rusia

[see project](#)



Healthcare Actiu

> **CEMDOE**
Santo Domingo

[see project](#)



Aiports Actiu

> **Mallorca**
Spain

[see project](#)



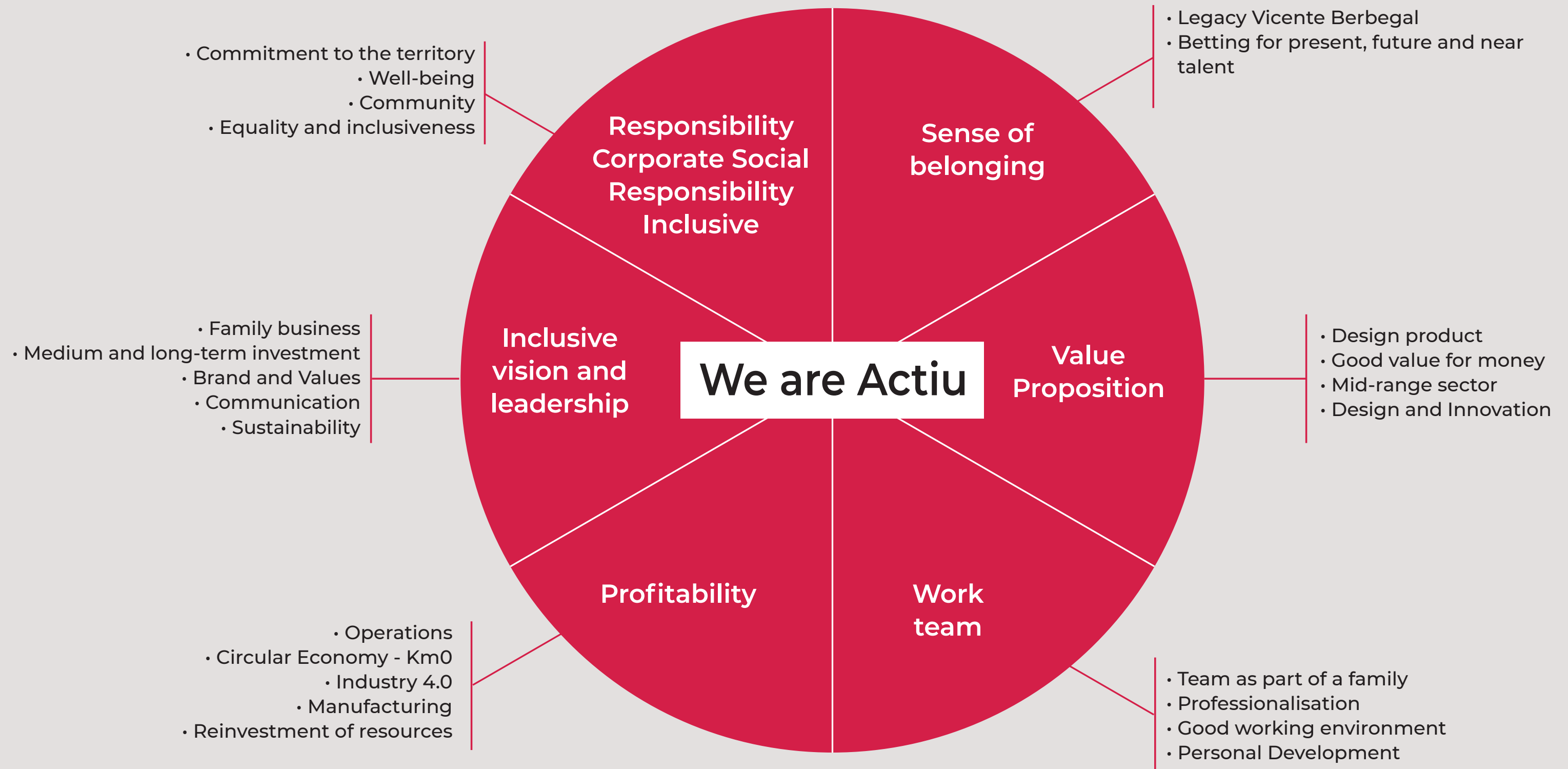
Education Actiu

> **Santa María Business**
Panamá

[see project](#)



We are **Actiu**



Family **Actiu**

1st and 2nd
Generation





Family
Actiu

Thank you

see video 

